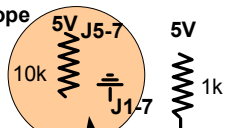


Bypass caps:
 Use 0.01uf cap
 Use 10uf cap PIC Vdd to ground
 Use 100uf cap L293d pin 8 to ground

Guider Port
 Pin 1 - NC
 Pin 2 - GND
 Pin 3 - East/Left
 Pin 4 - South/Down
 Pin 5 - North/Up
 Pin 6 - West/Right
 Left to right looking into the connector on scope



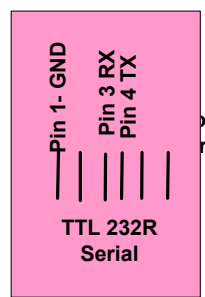
5V = stepper
 GND = Analog

Aux 12V Pin-4 → POWER Pin 1
 Aux Clk Pin-3 → 1k resistor
 Aux Data Pin-2 → 1k resistor
 Aux GND Pin-1 →

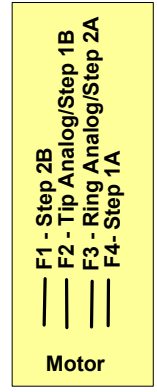
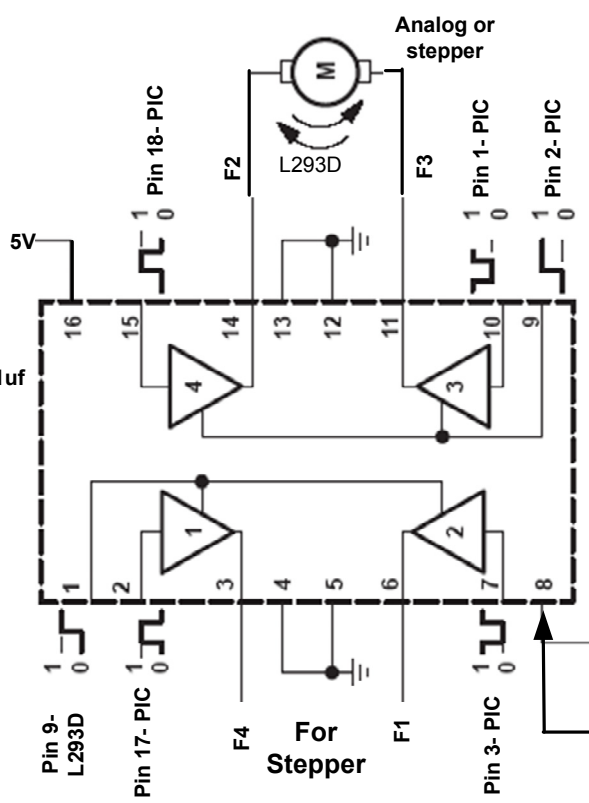
Left to right looking into the connector on scope

TTL Serial Pin 3

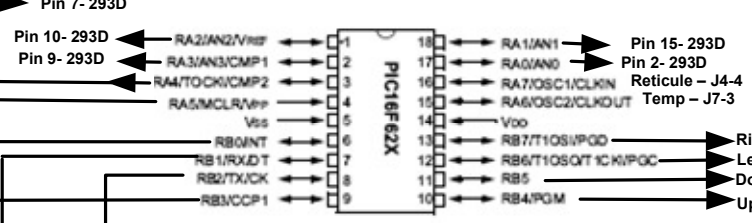
TTL Serial Pin 4



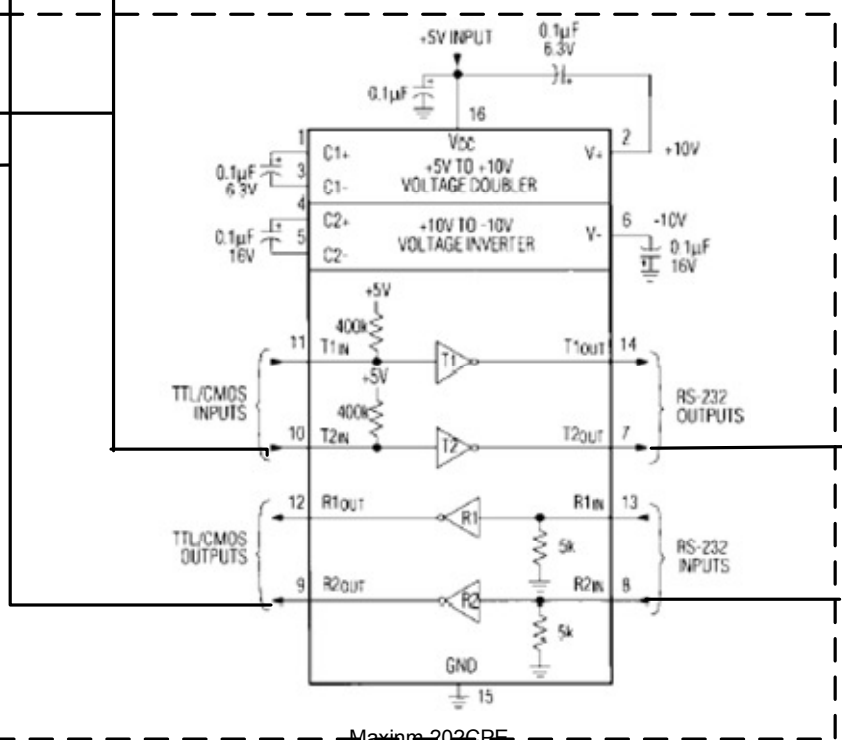
Serial



12V Power - Pin 2/3



ST4 Guider Port
 Pin 1 - NC
 Pin 2 - GND
 Pin 3 - East/Left
 Pin 4 - South/Down
 Pin 5 - North/Up
 Pin 6 - West/Right
 Left to right looking into the connector on scope



Maxim 202CPE

DB9-Pin3

DB9-Pin2